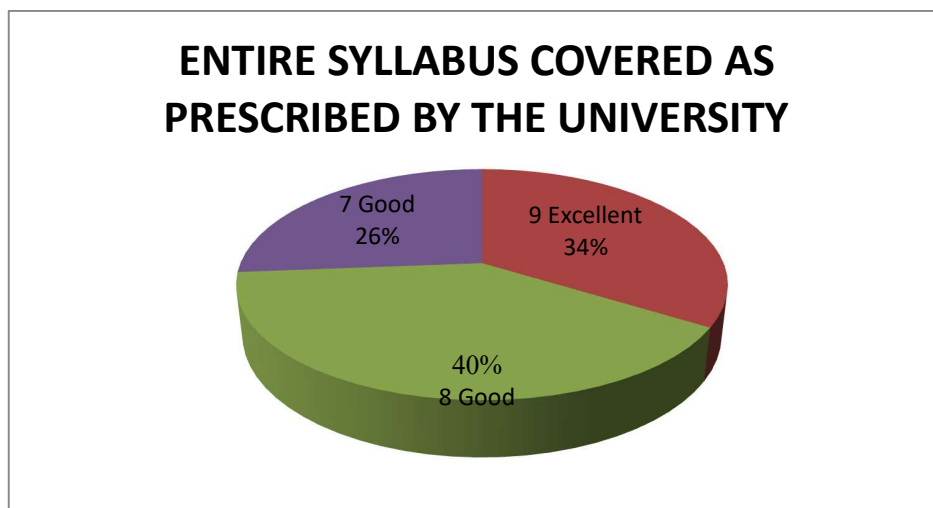


## **REPORT ON FEEDBACK RECEIVED FROM EMPLOYERS**

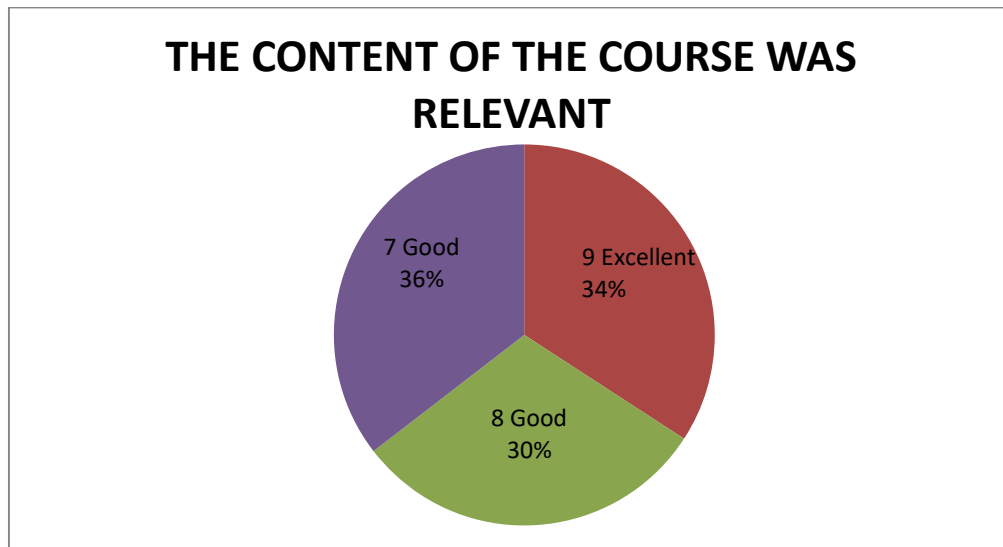
- A questionnaire was prepared to make a survey on various parameters of Government Dental College and Hospital, Ahmedabad and same was filled by the employer who recruited pass out students of in the year 2020-2021.
- The questionnaire consisted of 10 questions which were based primarily on attributes of curriculum/syllabus, facilities provided, syllabus covered, aspects covered beyond curriculum, etc. employers were asked to rate each question in 1 to 10 scale. The responses were analyzed in order to take corrective actions in relation to institutional vision and mission.
- The elaborative questionnaire along with its evaluation is given below:

### **1. ENTIRE SYLLABUS COVERED AS PRESCRIBED BY THE UNIVERSITY**



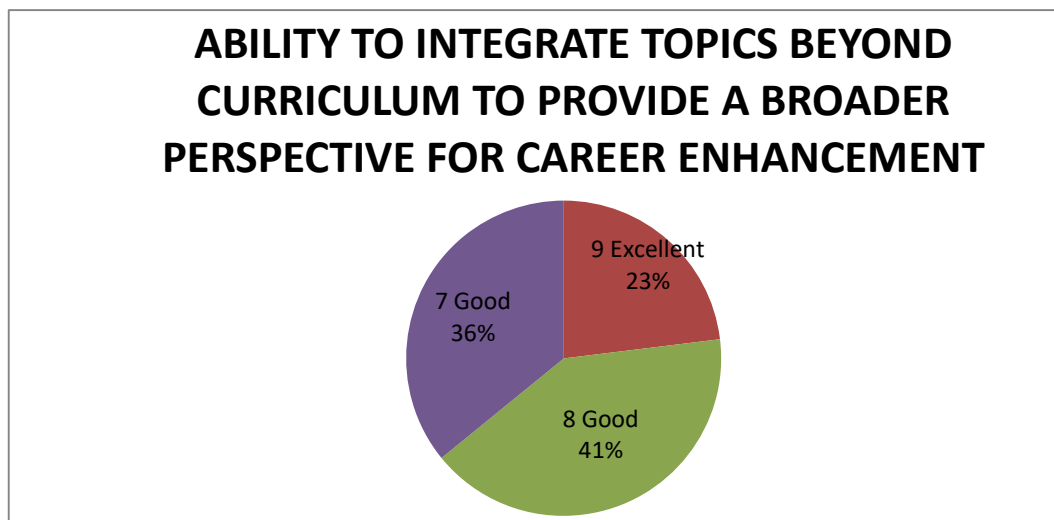
The given chart shows the percentage of respondents. 60% of employers rated excellent, 40% employers reported as good about the time adequacy provided for the completion of course.

## 2. THE CONTENT OF THE COURSE WAS RELEVANT



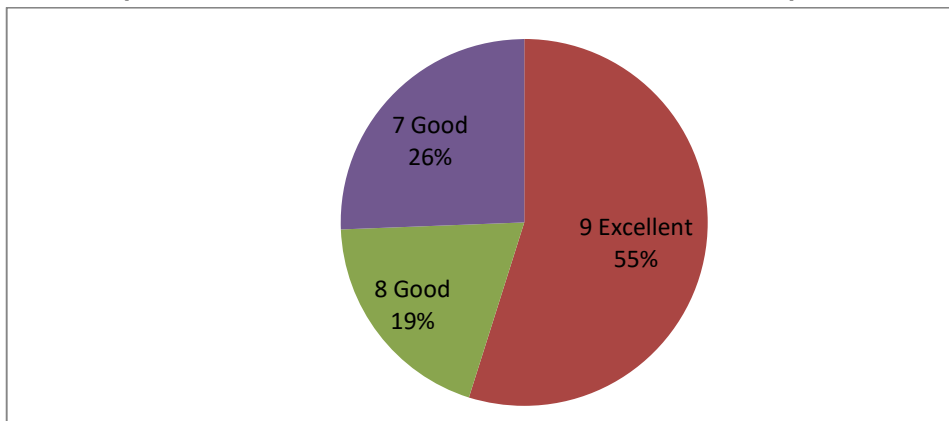
The given chart shows the percentage of respondents. 36% of employers rated excellent, 64% employers reported as about the relevance of the content of the course.

## 3. ABILITY TO INTEGRATE TOPICS BEYOND CURRICULUM TO PROVIDE A BROADER PERSPECTIVE FOR CAREER ENHANCEMENT



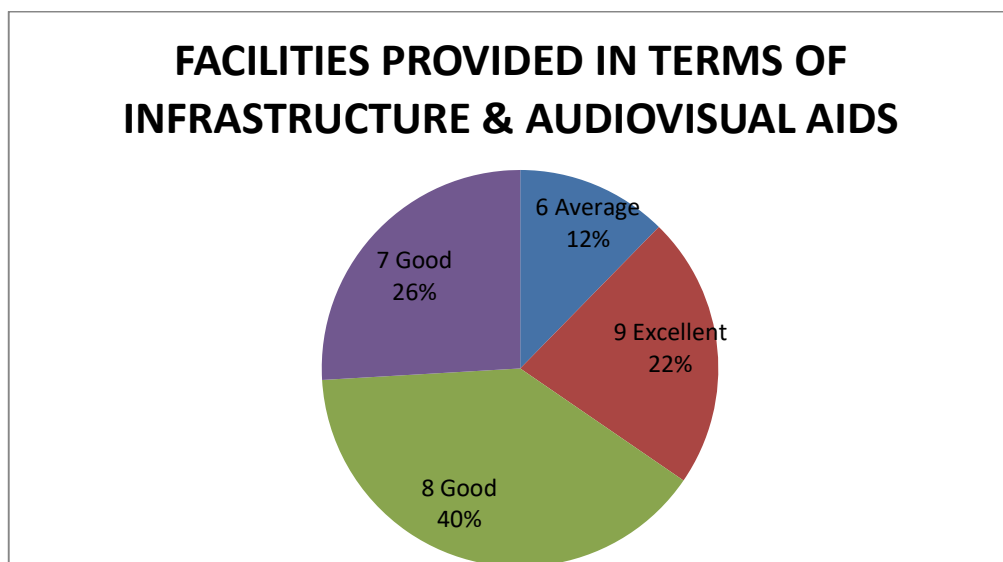
The given chart shows the percentage of respondents. 23% of employers rated excellent and 77% students reported as good about the ability to integrate topics beyond curriculum.

**4. WHEN YOU MEET A STUDENT, WHO HAS UNDERGONE SIMILAR PROGRAM FROM OUTSIDE THE INSTITUTE, YOUR PROGRAM WAS SUPERIOR/ INFERIOR IN TERMS OF THEORETICAL/ CLINICAL CONTENT**



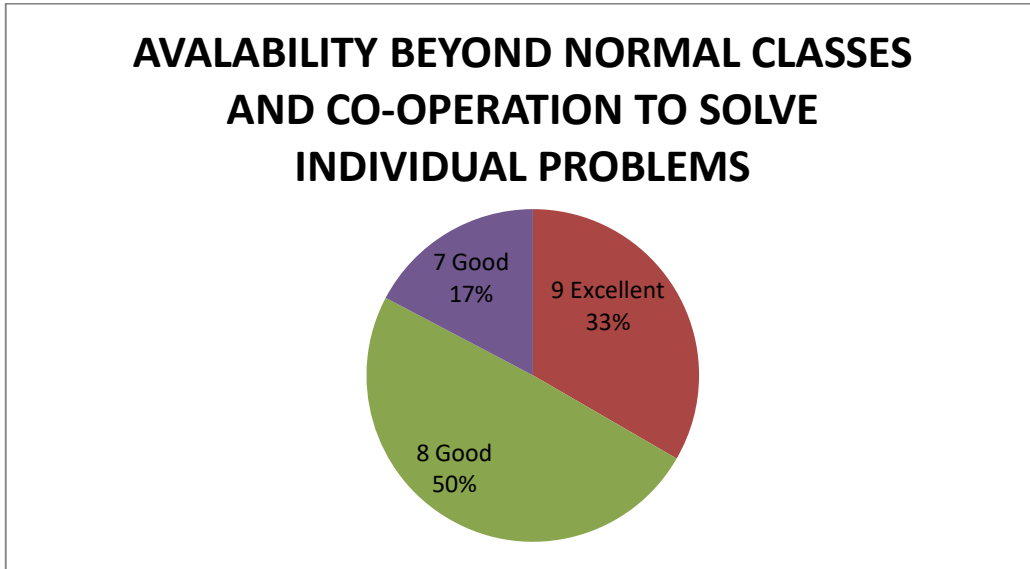
The given chart shows the percentage of respondents. 55% of employers rated excellent and 45% employers reported as good about the superiority of our program in relation to other institute.

**5. FACILITIES PROVIDED IN TERMS OF INFRASTRUCTURE & AUDIOVISUAL AIDS**



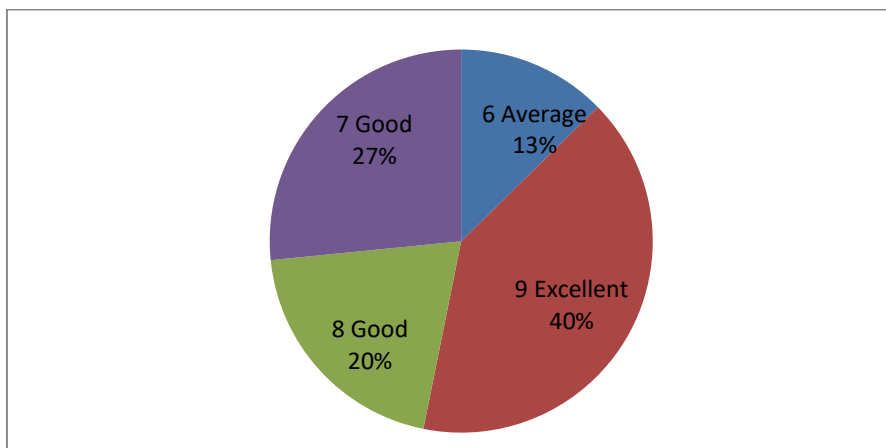
The given chart shows the percentage of respondents. 22% of employers rated excellent, 66% employers reported as good and 12% average about the facilities provided in terms of infrastructure and audiovisual aids.

## 6. AVAILABILITY BEYOND NORMAL CLASSES AND CO-OPERATION TO SOLVE INDIVIDUAL PROBLEMS



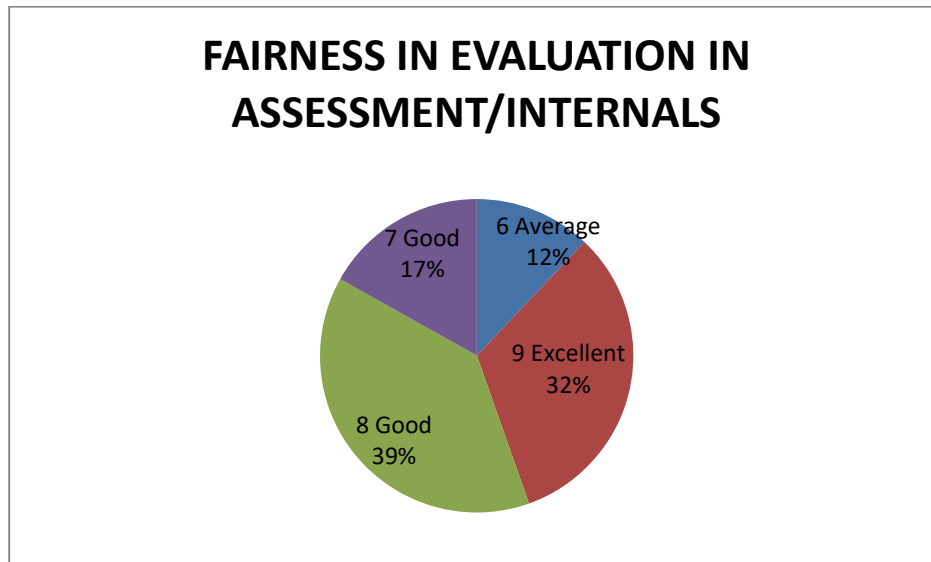
The given chart shows the percentage of respondents. 33% of employers rated excellent & 67% employers reported as good about the availability of beyond normal classes and cooperation to solve individual problems.

## 7. KNOWLEDGE GAINED AFTER COMPLETION OF COURSE



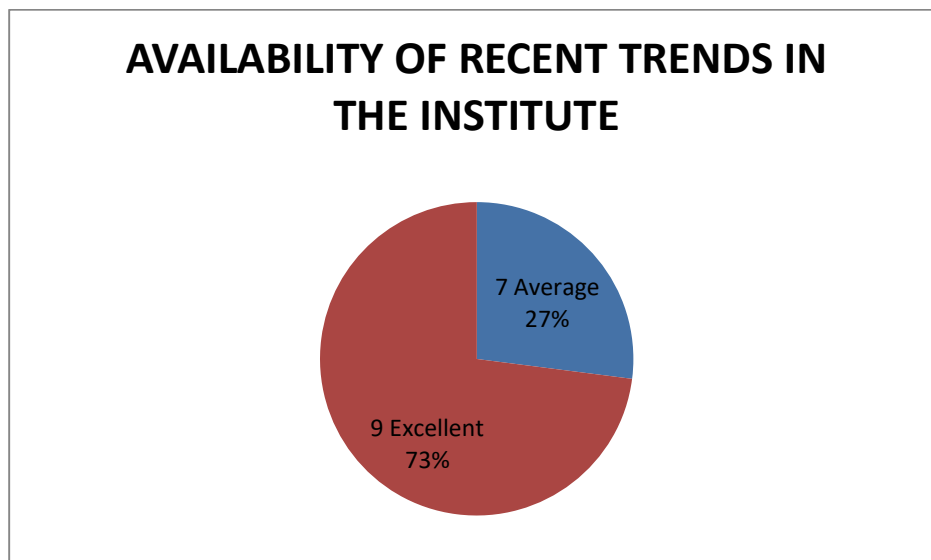
The given chart shows the percentage of respondents. 40% of employers rated excellent, 47% alumni reported as good and 13% of them reported average about the knowledge gained after completion of course.

## 8. FAIRNESS IN EVALUATION IN ASSESSMENT/INTERNALS



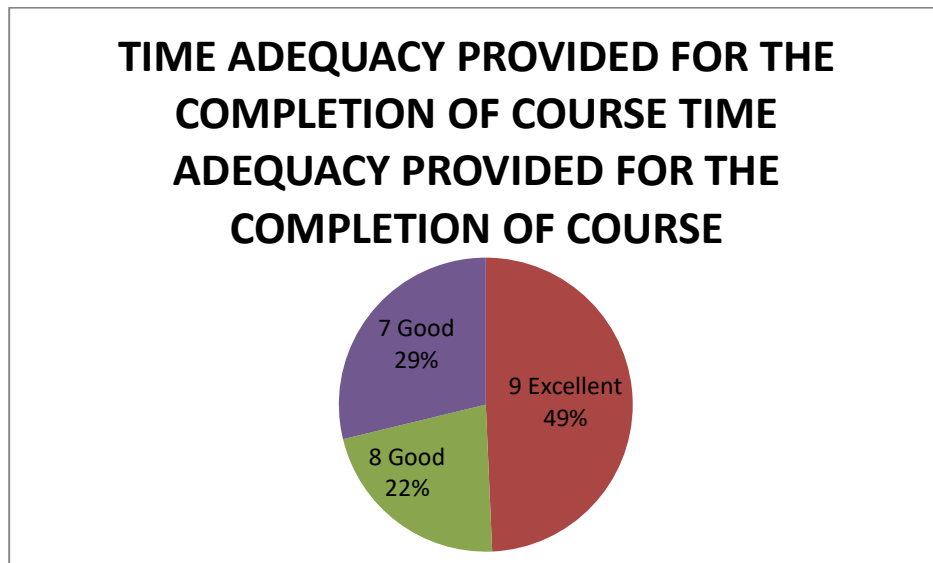
The given chart shows the percentage of respondents 56% reported as good and 32% of them reported excellent and 12% of them reported average about the fairness in evaluation in assessment/ internals.

## 9. AVAILABILITY OF RECENT TRENDS IN THE INSTITUTE



The given chart shows the percentage of respondents. 73% of employers rated excellent and 27% employers reported as average about the availability of recent trends in institute.

## 10. TIME ADEQUACY PROVIDED FOR THE COMPLETION OF COURSE



The given chart shows the percentage of respondents. 49% of employers rated excellent and 51% employers reported as good about the time adequacy provided for the completion of course.